

Phreesia

The Patient Check-in Company

With patient payments making up \$1 out of every \$4 of medical practice revenue, it's no wonder 10,000 clinicians use Phreesia as their electronic patient check-in solution.

**NO
HARDWARE
COSTS!**



Wireless, touchscreen PhreesiaPad – Phreesia is HIPAA- and PCI-compliant, and preserves the privacy and security of patient information. **Phreesia replaces all merchant processing fees.**

Increase cash flow and save staff time with Phreesia and SOAPware

Increase Cash Flow

Maximize cash flow both inside and outside of the office

- Automatically calculate accurate patient copayments at check-in
- Ask every patient to pay his/her copay and open balances before the exam
- Offer flexible payment options, including payment plans and online payments

Save Staff Time

Digitize check-in and capture intake and consent forms

- Maintain up-to-date patient demographic and clinical data
- Eliminate the need to scan paper forms
- Electronically verify eligibility and benefits during check-in



Integration Streamlines Office Workflow

Phreesia integrates with SOAPware to deliver a seamless patient check-in experience.

Reduce staff time spent manually transferring patient data, **increase cash flow** and collect **more accurate patient information** with the Phreesia-SOAPware interface!

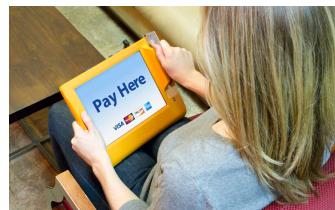
How it works



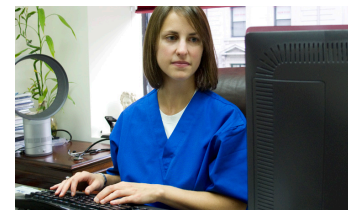
1 PhreesiaPads are handed to patients



2 Patients complete check-in interviews while waiting to be seen



3 Patients pay their copays and balances on the PhreesiaPad



4 Patient information and payments is easily managed and accessible via the Phreesia Dashboard or SOAPware